



M.U.L.E. TACTICAL

OWNER'S MANUAL FOR

THE MULE ADAPTIVE STORAGE STOCK™

Patent Pending 61/993,634

“THE NEXT LEVEL OF PREPAREDNESS”

TABLE OF CONTENTS

Read First	3
Required Tools	4
Removing Collapsible Stock	5
Removing Standard Stock	6
Installing THE MULE with a Contoured Nose Cone	7
Installing THE MULE with a Tapered Nose Cone	8
<i>My stock adapter requires use of a castle nut</i>	10
<i>My stock adapter does not require use of a castle nut</i>	11
Operating THE MULE	11
<i>Module Removal:</i>	11
<i>Module Installation:</i>	12
<i>Holster Installation:</i>	12
<i>Holster Removal:</i>	13
Exploded View	14
Warranty	15
<i>RMA Requests</i>	15
Customer Support and Contact Information	16

! PLEASE READ CAREFULLY !

Installation of **THE MULE** ADAPTIVE STORAGE STOCK™ requires an in-depth knowledge of your firearm and its various parts. A professional gunsmith is always recommended when making modifications to your firearm.

If you intend on performing the replacement yourself, please follow the guidelines below:

1. Prior to handling your firearm make sure the firearm is **“Clear & Safe”** in accordance with the manufacturer’s guidelines. *(i.e. Engage the safety; remove all ammunition and magazine.)*
2. Prior to making any modifications to your firearm always consult the manufacturer’s Owner/Maintenance manual(s) for your firearm and all installed 3rd party equipment if applicable.
3. Only make modifications to your firearm in a work area that is free of live ammunition.

REQUIRED TOOLS



The following tools are required for the removal of **most stocks*** and/or installation of **THE MULE Adaptive Storage Stock®**.

1. Flathead Screwdriver
2. Armorer's Wrench
3. Allen Wrenches

RECOMMENDED TOOLS



The following tool is recommended for installation of **THE MULE Adaptive Storage Stock®** onto your firearm.

1. Torque Wrench

*** Consult the manufacturer's Owner/Maintenance manual for your firearm.**

REMOVING COLLAPSIBLE STOCK



Lift up on the adjustment lever and slide the stock off the buffer tube.



Place your thumb over buffer while depressing the buffer detent using a flathead screwdriver to release the buffer and spring in a controlled manner. Slowly remove the buffer and spring while maintaining constant pressure on the buffer detent.



Use armorer's wrench to engage notches on the castle nut and turn counter-clockwise until it breaks free.



After loosening the castle nut, the end plate disengages, allowing you to unscrew the buffer tube by hand. Pay attention not to lose spring and buffer detent that is secured in place by the end plate.

REMOVING STANDARD STOCK



Remove the top butt stock screw.



Slide the stock off toward the rear. The buffer tube (with buffer and spring inside) should now be visible.



Place your thumb over buffer while depressing the buffer detent using a flathead screwdriver to release the buffer and spring in a controlled manner. Slowly remove the buffer and spring while maintaining constant pressure on the buffer detent.



Use your armorer's wrench to engage the cutout at the end of the buffer tube and break it free. Secure the buffer detent with your thumb and continue removing the buffer tube.

INSTALLING THE MULE WITH A CONTOURED NOSE CONE



Remove SPACER⁽²⁸⁾ from BUFFER TUBE⁽¹²⁾ by tilting UPPER STOCK⁽¹⁾ downward and allowing the spacer to slide out.



Remove LOCK RING⁽¹⁹⁾ from BUFFER TUBE⁽¹²⁾.



Remove HI-LO SCREWS⁽²⁰⁾ from BUTT PAD⁽⁵⁾ and then remove the butt pad.



Remove SOCKET HEAD CAP SCREW⁽⁶⁾ from UPPER STOCK⁽¹⁾.



Remove BUFFER TUBE⁽¹²⁾ from UPPER STOCK⁽¹⁾.



Thread BUFFER TUBE⁽¹²⁾ onto your firearm while depressing buffer detent until buffer tube secures the buffer detent. Tighten buffer tube to manufacturer's torque specifications. (usually between 30 and 40 ft. lb.)

FOR AR STYLE RIFLES: Thread buffer tube onto the lower receiver of your firearm.

FOR NON-AR STYLE RIFLES: Thread buffer tube onto the stock adapter of your firearm.



Slide **THE MULE** ADAPTIVE STORAGE STOCK™ onto the BUFFER TUBE(12). Pay attention not to bend the detent spring while it compresses.



Once **THE MULE** ADAPTIVE STORAGE STOCK™ is flush with your firearm's lower receiver, secure with SOCKET HEAD CAP SCREW(6).



Reattach BUTT PAD(5) and tighten HI-LO SCREWS(20).

SPACER(28) INSTALLATION

For AR Style Rifles with Carbine Length buffers and springs:

Put spacer back into the BUFFER TUBE(12) before inserting the buffer and spring.

For AR Style Rifles with Rifle Length buffers and springs:

No spacer is necessary.

For Non-AR Platforms and AR platforms that do not use a buffer and spring:

No spacer is necessary.

INSTALLING THE MULE WITH A TAPERED NOSE CONE



Remove SPACER(28) from the BUFFER TUBE(12) by tilting UPPER STOCK(1) downward and allowing the spacer to slide out.



Remove LOCK RING⁽¹⁹⁾ from BUFFER TUBE⁽¹²⁾.



Remove HI-LO SCREWS⁽²⁰⁾ from BUTT PAD⁽⁵⁾ and then remove the butt pad.



Remove SOCKET HEAD CAP SCREW⁽⁶⁾ from UPPER STOCK⁽¹⁾.



Remove SOCKET HEAD BUTTON SCREWS⁽²⁷⁾ from UPPER STOCK⁽¹⁾.



Slide off CONTOURED NOSE CONE⁽²³⁾.

THE **MULE** ADAPTIVE STORAGE STOCK™ comes packaged with the contoured nose cone attached.



Remove BUMPER⁽²⁹⁾ and install on tapered nose cone.



Align the keyway on BUFFER TUBE⁽¹²⁾ to 6 o'clock position.

After completing these steps determine if your stock adapter requires the use of a castle nut.

If a castle nut **is required**, proceed to the subheading “**MY STOCK ADAPTER REQUIRES USE OF A CASTLE NUT**”.



Slide on TAPERED NOSE CONE⁽²⁴⁾.



Insert and tighten SOCKET HEAD BUTTON SCREWS⁽²⁷⁾.

If a castle nut **is not required**, proceed to the subheading “**MY STOCK ADAPTER DOES NOT REQUIRE USE OF A CASTLE NUT**”.

MY STOCK ADAPTER REQUIRES USE OF A CASTLE NUT

1. Thread the castle nut onto the buffer tube and once it engages the nose cone continue to thread it on an additional ¼” pushing the **THE MULE ADAPTIVE STORAGE STOCK™** back as you turn the castle nut. The castle nut will stop when it bottoms out the threads on the BUFFER TUBE⁽¹²⁾.
2. Install the anti-rotation bracket/end plate that came with your stock adapter onto the BUFFER TUBE⁽¹²⁾.
3. Thread BUFFER TUBE⁽¹²⁾ into your firearm’s stock adapter following the adapter manufacturer’s recommended depth and align the keyway on buffer tube to the 6 o’clock position (*may vary between stock adapters*)
4. Slide anti-rotation bracket/end plate forward and tighten castle nut to factory specifications.
5. Push **THE MULE ADAPTIVE STORAGE STOCK™** forward until making contact with castle nut. Secure with SOCKET HEAD CAP SCREW⁽⁶⁾.
6. Reattach BUTT PAD⁽⁵⁾ and secure with the HI-LO SCREWS⁽²⁰⁾.

MY STOCK ADAPTER DOES NOT REQUIRE USE OF A CASTLE NUT

1. Insert and tighten the SOCKET HEAD CAP SCREW⁽⁶⁾ into UPPER STOCK⁽¹⁾. Reattach BUTT PAD⁽⁵⁾ and secure with the HI-LO SCREWS⁽²⁰⁾.
2. Thread BUFFER TUBE⁽¹²⁾ into your firearm's stock adapter following the adapter manufacturer's recommended depth. *(may vary between stock adapters)*
3. When BUFFER TUBE⁽¹²⁾ is at appropriate depth, align the keyway to the 6 o'clock position of your firearm.
4. Lock down BUFFER TUBE⁽¹²⁾ in accordance with the stock adapter manufacturer's guidelines. *(i.e. some stock adapters will have a set screw that locks the buffer tube in place)*

OPERATING THE MULE

MODULE REMOVAL:



Open LOWER STOCK⁽²⁾ by depressing both RELEASE BUTTONS⁽⁹⁾ simultaneously on the UPPER STOCK⁽¹⁾.



Grasp the MODULE⁽¹⁶⁾ and slide upward along the dovetail rails.



Pull the MODULE⁽¹⁶⁾ out of the stock.

MODULE INSTALLATION:

1. Open LOWER STOCK⁽²⁾ by depressing both RELEASE BUTTONS⁽⁹⁾ simultaneously on the UPPER STOCK⁽¹⁾.
2. Slide MODULE⁽¹⁶⁾ into the stock until the raised rails on the side of MODULE⁽¹⁶⁾ are aligned with the dovetail rails in the LOWER STOCK⁽²⁾.
3. Slide the MODULE⁽¹⁶⁾ downward until secured in place.

HOLSTER INSTALLATION:



Open LOWER STOCK⁽²⁾ by depressing both RELEASE BUTTONS⁽⁹⁾ simultaneously on the UPPER STOCK⁽¹⁾.



Slide the HOLSTER⁽²⁶⁾ into the UPPER STOCK⁽¹⁾.



Align the male dovetail panels on each side of HOLSTER⁽²⁶⁾ with the dovetail rails in the LOWER STOCK⁽²⁾.



Push the HOLSTER⁽²⁶⁾ down until seated.

HOLSTER REMOVAL:



Open LOWER STOCK⁽²⁾ by depressing both RELEASE BUTTONS⁽⁹⁾ simultaneously on the UPPER STOCK⁽¹⁾.

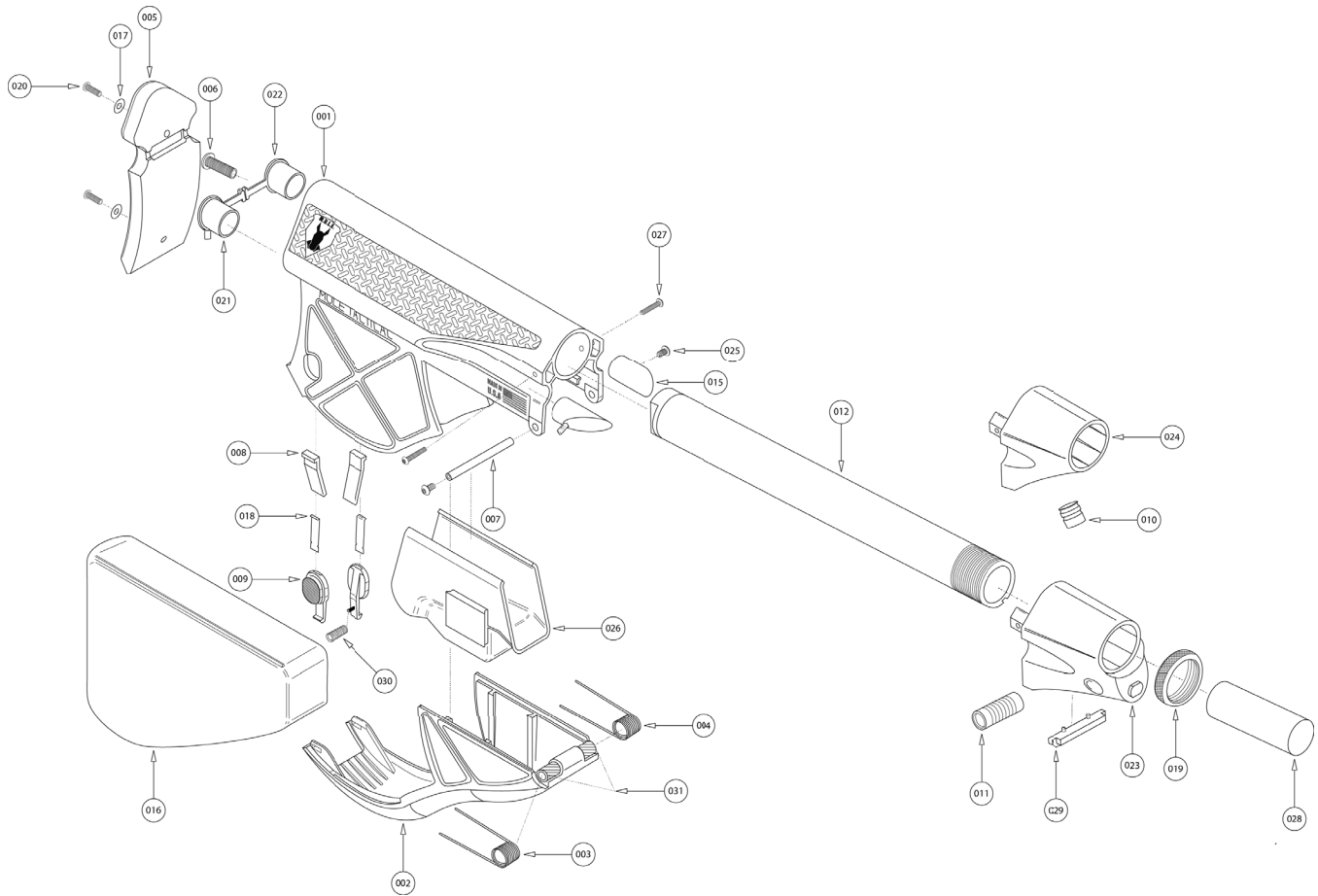


Slide one or two fingers under the HOLSTER⁽²⁶⁾.



Slide HOLSTER⁽²⁶⁾ upward along the dovetail rails and pull HOLSTER⁽²⁶⁾ out of stock.

EXPLODED VIEW



001 - UPPER STOCK

011 - DOUBLE SLING INSERT

021 - RH REAR PLUG

002 - LOWER STOCK

012 - BUFFER TUBE ASSEMBLY

022 - LH REAR PLUG

003 - RH TORSION SPRING

013 - NA

023 - CONTOURED NOSE CONE

004 - LH TORSION SPRING

014 - NA

024 - TAPERED NOSE CONE

005 - BUTT PAD

015 - FRONT PLUG

025 - 6-32 X .250 LONG BUTTON HEAD CAP SCREW

006 - 1/4-28 X .875 BUTTON HEAD CAP SCREW

016 - MODULE

026 - HOLSTER

007 - HINGE PIN

017 - #6 WASHER

027 - 4-40 .625 HEX SOCKET BUTTON HEAD CAP SCREW

008 - RETAINER

018 - LEAF SPRING

028 - BUFFER SPACER

009 - BUTTON

019 - LOCK NUT

029 - BUMPER

010 - SINGLE SLING INSERT

020 - #6 X .500 HI-LOW SCREW

030 - COMPRESSION SPRING

031 - SPRING BUSHINGS

WARRANTY



THE MULE ADAPTIVE STORAGE STOCK™ carries a limited lifetime warranty against defects in materials or workmanship plus a one year limited replacement warranty against normal wear.

Additional details can be found at <http://www.muletac.com/warranty/>

RMA REQUESTS

Return Merchandise Authorizations (RMA) can be obtained by visiting <http://www.muletac.com/rma/>.

CUSTOMER SUPPORT AND CONTACT INFORMATION

M.U.L.E. TACTICAL

P.O. Box 1020

Mount Washington, KY 40047

Phone: 1-855-MULETAC

Email: info@muletac.com (*for general inquiries*)

Email: sales@muletac.com (*for sales/distribution inquiries*)

Email: support@muletac.com (*for product support inquiries*)

Website: <http://www.muletac.com>

Facebook: <https://www.facebook.com/Muletac>

Instagram: http://instagram.com/mule_tactical

Google+: <https://plus.google.com/+Muletactical>

YouTube: <https://www.youtube.com/user/muletac>